







2



1



1

- Professional Landlord
- White Goods Included
- Pets Considered
- Zero Deposit Option Available
- Long Term Tenancies Available
- New Build Property
- Off Road Parking
- Call For More Information
- Council Tax Band: B





ZERO DEPOSIT OPTION AVAILABLE. Jan Forster Estates are delighted to offer this brand new 'Denford', located in the magnificent new development called West Meadows in Cramlington.

Living here means you can enjoy country walks at Northumberlandia, just minutes from your doorstep. As well as being a short drive or walk from Manor Walks shopping centre and Cramlington train station. With local amenities, close access to the A19 and A1 and schools rated 'Good' nearby, West Meadows is the perfect place for your family to call home.

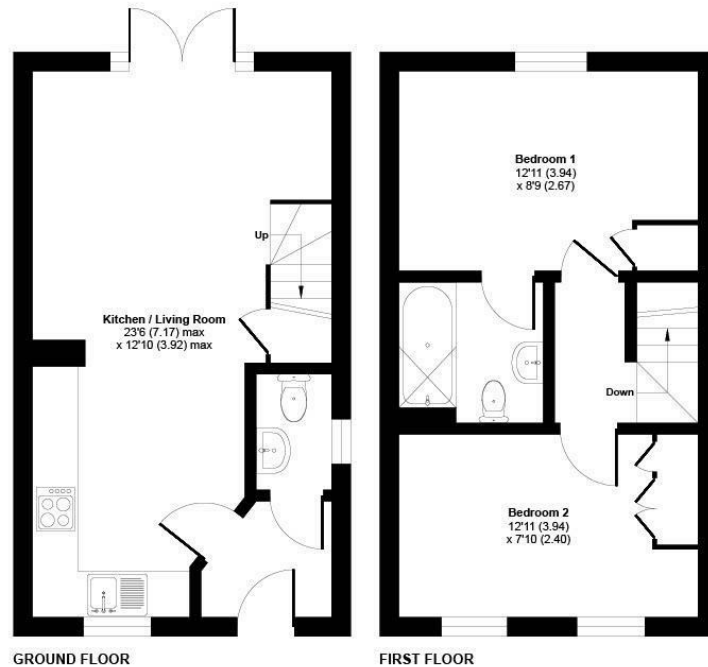
The ground floor comprises an entrance hallway, complete with a WC, leading to a modern layout that embodies the essence of open plan living. Towards the front, you'll find a spacious kitchen diner, while a generously sized lounge occupies the rear of the property. Featuring a staircase with storage beneath and French doors that open up to the rear garden, creating a sense of openness and connection to the outdoors. On the first floor, there are two expansive double bedrooms, offering ample storage and floor space. Separating these bedrooms is the modern family bathroom.



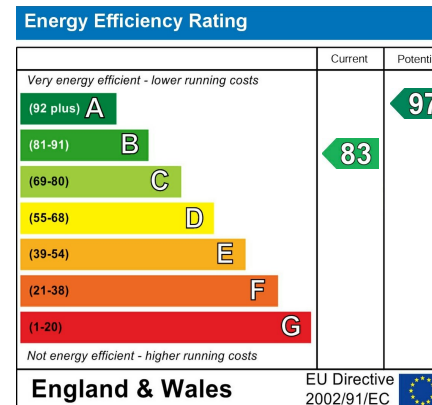
Lomond, on behalf of Lloyds Living, part of Lloyds Banking Group, operates a growing portfolio of more than 3,000 professionally managed homes for rent, improving access to good value, quality, sustainable housing across the UK. Lloyds Living helps to support investment into local communities by building and renting homes that people want, in the places they are needed.

Property features and specifications may vary on a plot-by-plot basis. Whilst every attempt has been made to ensure accuracy, all measurements are approximate and not to scale. Computer-generated images, floor plans, and photos (CGIs) are for illustrative purposes only and may not represent the final design or finish of the property. For further information on layouts and specifications, please speak to your Lloyds Living representative.

Approximate Area = 606 sq ft / 56.2 sq m  
For identification only - Not to scale



Floor plan produced in accordance with RICS Property Measurement Standards incorporating International Property Measurement Standards (IPMS2 Residential). © nichecom 2025. Produced for Lomond Property (Lettings). REF: 1370879



## The difference between house and home

You may download, store and use the material for your own personal use and research. You may not republish, retransmit, redistribute or otherwise make the material available to any party or make the same available on any website, online service or bulletin board of your own or of any other party or make the same available in hard copy or in any other media without the website owner's express prior written consent. The website owner's copyright must remain on all reproductions of material taken from this website.



[www.janforsterestates.com](http://www.janforsterestates.com)

Gosforth  
High Heaton  
Tynemouth  
Property Management Centre

0191 236 2070  
0191 270 1122  
0191 257 2000  
0191 236 2680

